

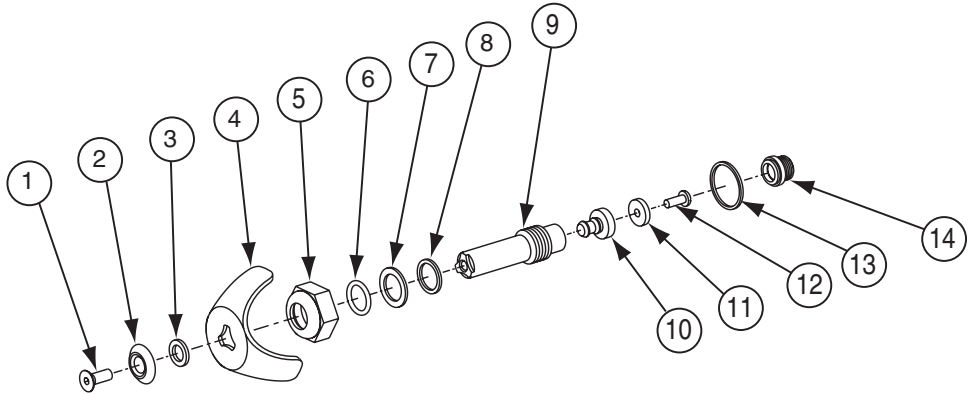


BEST PLUMBING SPECIALTIES



Compression Valve, Current Style — Hot, Cold or Tempered

For Individual, Econo-Walls, Wall Savers, Panelons and Column Showers



Parts List

Item	Part No.	Description	Assembly 99050907	Valve Stem Assembly 99101055	Valve Stem Extension 99310826	Repair Parts Kit 88085562
			Qty			
1	991010402	Screw	1	—	—	—
2	99101043	Index Washer (White)	1	—	—	—
2	99101044	Index Washer (Blue)	1	—	—	—
2	99101045	Index Washer (Red)	1	—	—	—
3	99101053	Insert Washer	1	—	—	—
4	99101046	Handle	1	—	—	—
5	99101047	Bonnet	1	—	—	—
6	99101048	O-Ring	1	—	—	1
7	99101054	Fiber Washer	1	—	—	1
8	99101049	Brass Washer	1	—	—	—
9	99101050	Valve Stem	1	1	—	—
10	99101051	Valve Stem Extension	1	1	1	1
11	99080063	Bibb washer	1	1	1	1
12	99101056	Screw	1	1	1	1
13	99092517	Fiber Washer for Valve Body	—	—	—	1
*14	99310827	Valve Seat - H & C	—	—	—	1

NOTE: It is not recommended that the components to the stem assemblies be ordered individually. It is likely that the valve stem extension can not be removed without breaking as it is made of Celcon plastic. If breakage occurs, that portion of the plastic remaining in valve stem no. 99101050 will have to be drilled out. It is our recommendation that valve stem assembly no. 99101055 always be replaced complete.

Used in Conjunction With the Following Existing Parts:

99120896 Valve Body  
99034347 Escutcheon, Columns  
88082960 Escutcheon, Wall Savers, Panelons

\* Use 3/8" Allen Wrench to remove valve seat

NOTE: Older style columns may require a special bushing for the seat: 88083023

99050907 Complete valve stem and handle assembly with White Index Washer (Tempered).

99274002 Complete valve stem and handle assembly with Blue Index Washer (Cold).

99274003 Complete valve stem and handle assembly with Red Index Washer (Hot)

Compression Valve, Current Style — Hot, Cold or Tempered

How They Work:

Counter-clockwise rotation of the handle and valve stem causes the bibb washer to move away from the valve seat allowing water to flow through the valve seat.

Troubleshooting		
Problem -----	Cause -----	Solution -----
Water drips from shower head	Worn bibb washer  Mineral or foreign material build up on valve seat	Replace bibb washer  Clean or replace valve seat
Water drips from handle or bonnet	O-Ring worn or bonnet insufficiently tightened	Replace O-Ring or tighten bonnet
Water will not shut off	Bibb washer retaining screw worked loose resulting in washer not seating properly	Tighten or replace washer retaining screw